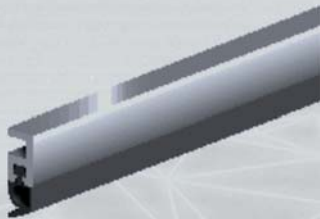




Weather seals are usually made of metal, or other material, designed so that when installed at doors or windows, it will retard the passage of air, moisture or dust around the door or window sash.

"ELLEN" PTS PVC Perimeter Seal



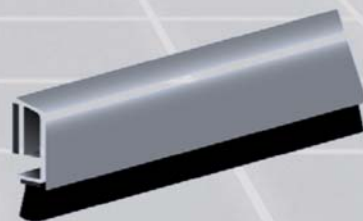
A general purpose seal for doors and windows and is especially designed for timber casement windows and all hinged doors. The PTS profile is manufactured from rigid uPVC incorporating a soft vinyl insert which acts as a seal against the closing frame.

Features

- Suitable for timber casement windows and all hinged doors

A general purpose, hard wearing bottom seal especially designed for interior doors. It is very effective on sliding doors, uneven surfaces and for sealing larger gaps. The rigid uPVC body incorporates an antistatically treated polypropylene pile seal.

"ELLEN" PDS-B-ZK Rigid uPVC Door Threshold Seal



Features

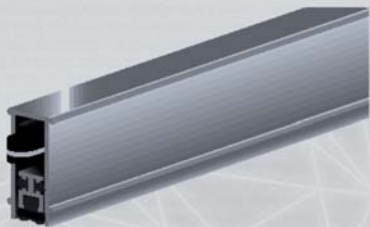
- A peel-off self-adhesive backing strip for quick and neat fixing



Acoustic seals can help to reduce the amount of sound that passes through a doorway. Sealing the gaps around a door is of prime importance when reducing the amount of sound entering or leaving a room or building.

"ELLEN" ELLEN MATIC SPECIAL 2

Automatic Door Seal



Consists of an extruded aluminium incorporating with a double vinyl seal which not only guarantees a perfect barrier, but also reduces unwanted noise level. The sealing distance may be altered by turning the adjusting screw above the activating roller at the end of the fitting.

Features

- Suitable for both outward and inward opening doors
- Dutch TNO tested of sound reduction upto 48dB
- Fire-retarding for upto 30 minutes where depends on other construction parts



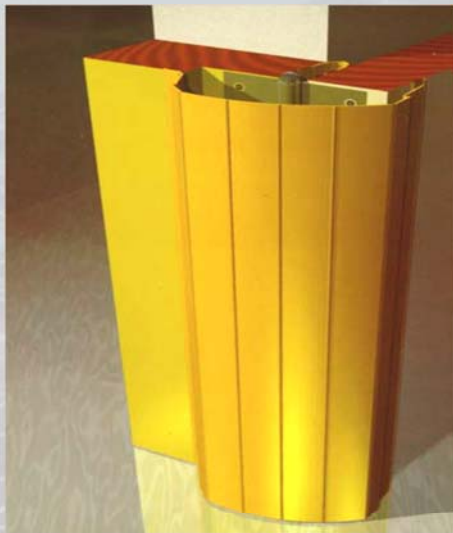
Door Seals (Special Applications)

FINPROTECT can prevent fingers from being trapped at the hinge side of the door.

The mounting of FINPROTECT is a matter of measuring, marking off and screwing on. By means of the clever swing-back construction all screws are screwed on the inside of the excluder, and are invisible from the outside.

"ELLEN" FINPROTECT

Synthetic Finger Protective Excluder



A finger protection system that includes a set of two synthetic excluders, which are mounted on the hinge side of the door to prevent serious injury through fingers being trapped on the hinge side of doors.

Features

- A safer environment for children and the elderly
- A working life of 5 years or longer
- Fire rating Class M1 for radiation and complementary test
- Fit a wide range of door types
- Fast easy fixing
- Extremely durable and easy to clean
- Aesthetic and available in seven colours

